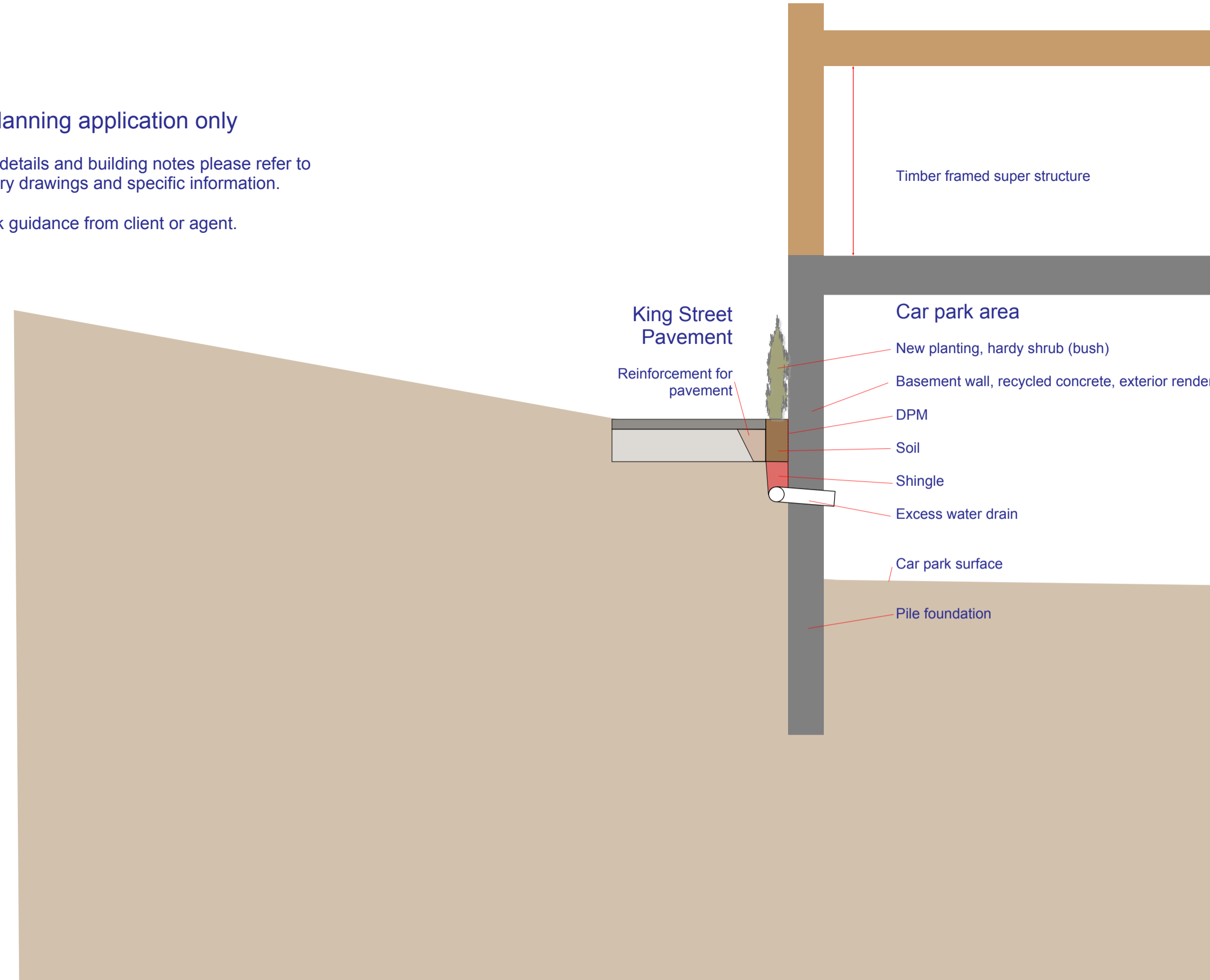


For planning application only

For construction details and building notes please refer to supplementary drawings and specific information.

Or seek guidance from client or agent.

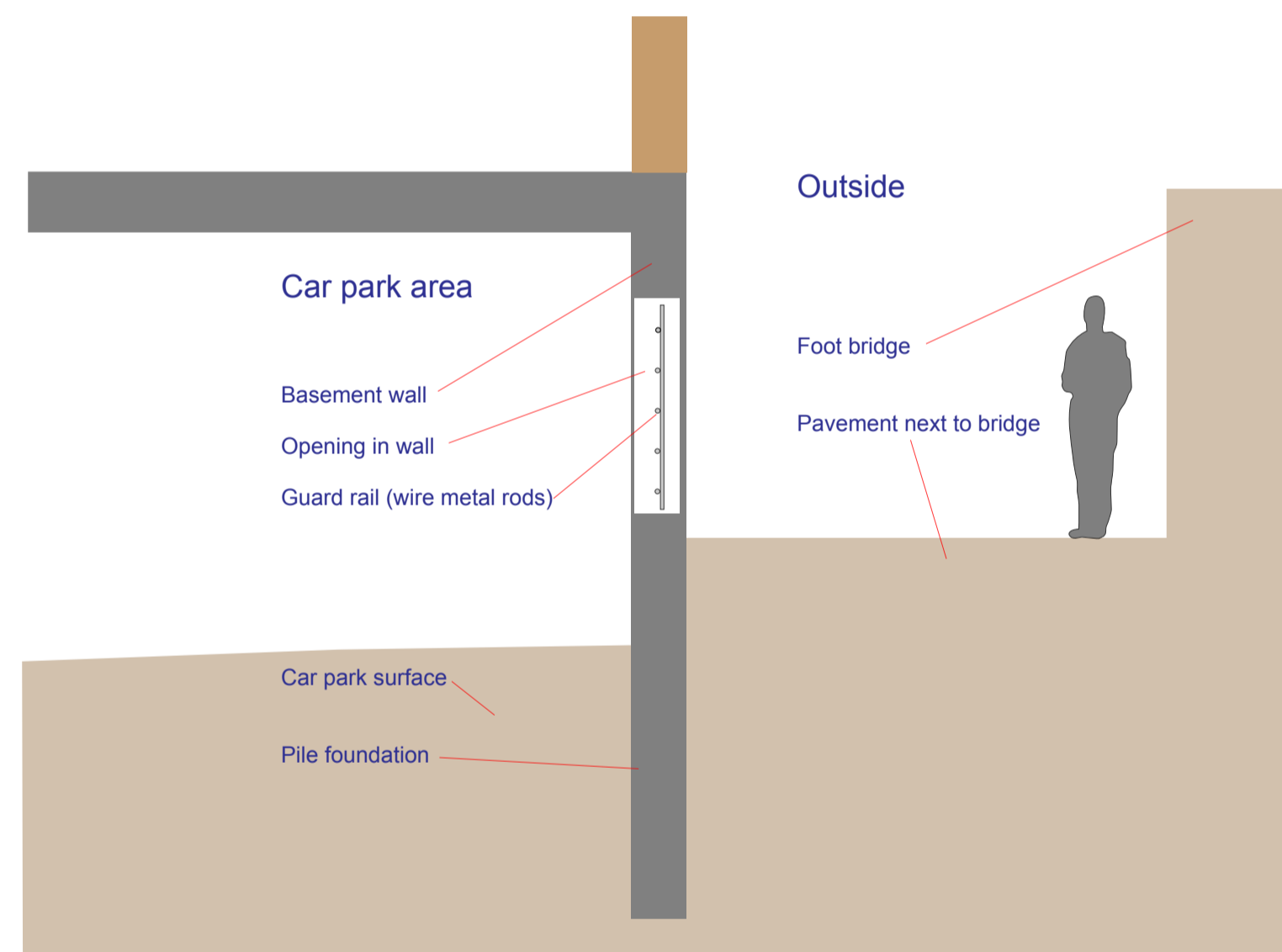


Section A1 detail (illustration scale)

This drawing shows the detail for the possible planting of shrubs/bushes as an addition to the King Street elevation. This planting would help defend the lower wall from anti social behaviour and create more interest at street level.

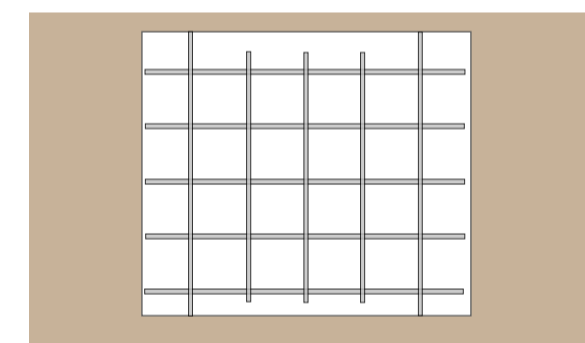
Using the same below ground design, the planting feature could be used to allow controlled growth over the whole lower wall. A 'green wall' could then be established which would create a unique design feature.

Green Growing Wall



Section A2 detail (illustration scale)

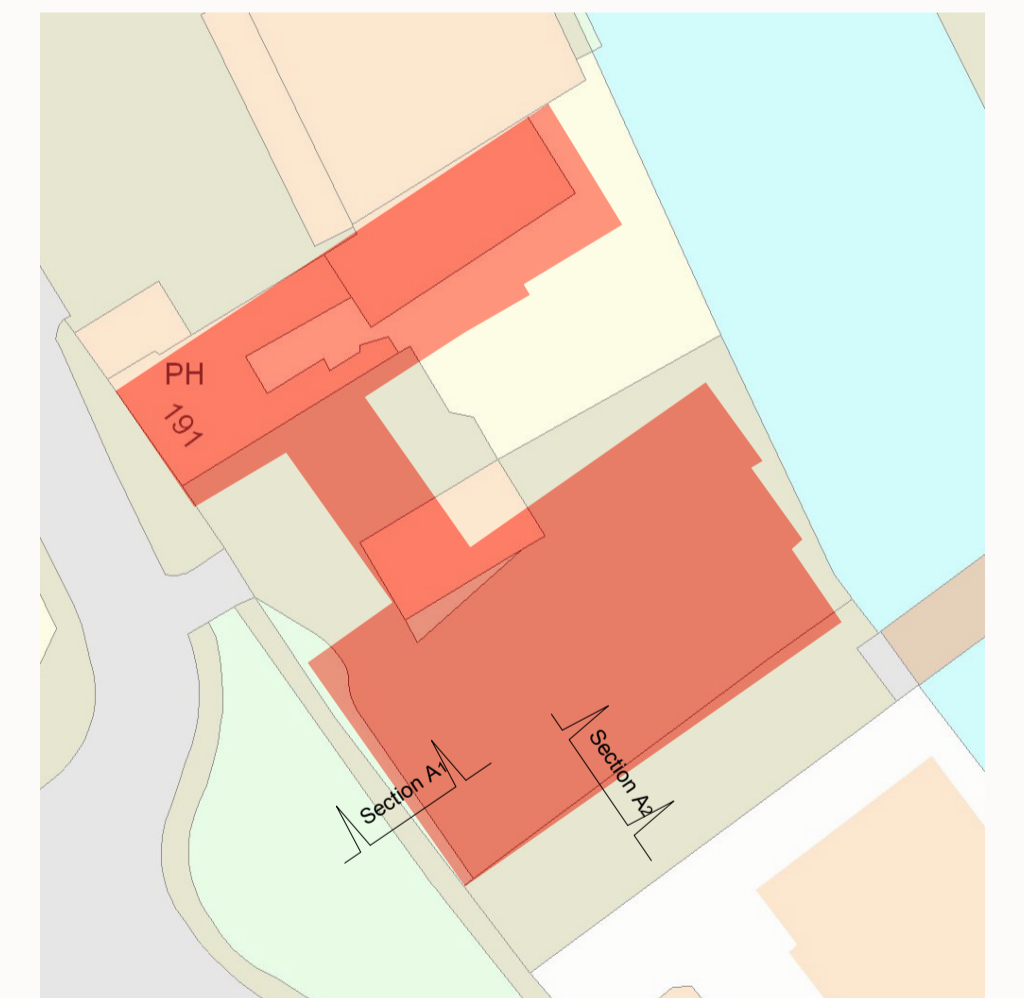
This drawing shows the detail for the possible secure fencing that could be used in new openings in lower wall.



Metal rods would be ideally used, securely fixed. Similar to other basements seen in Norwich.

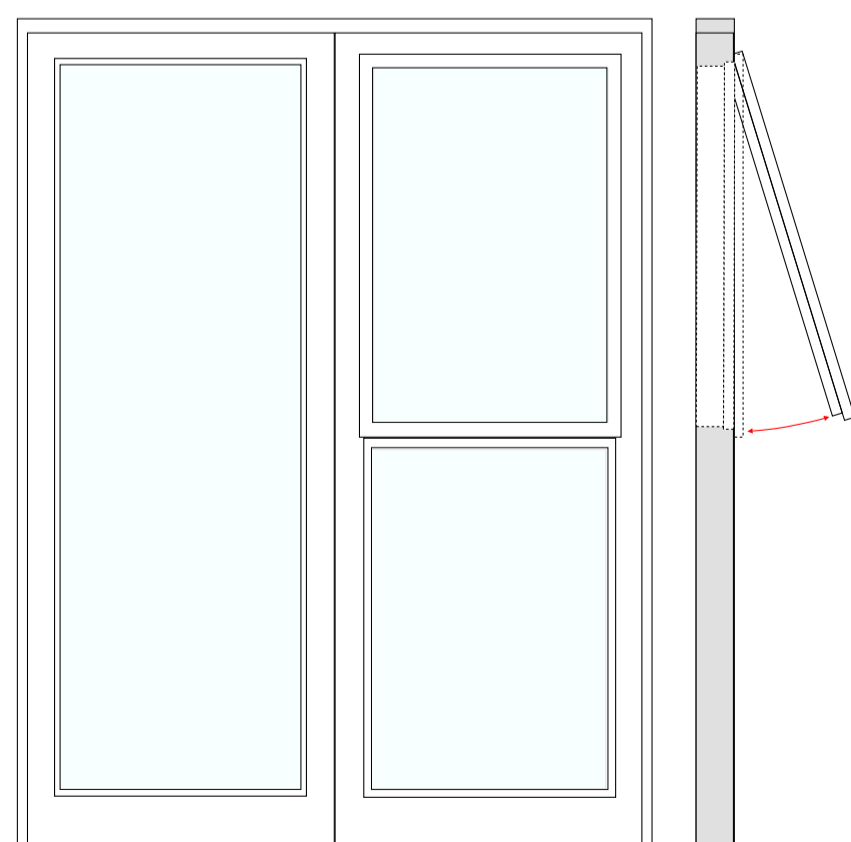
Construction notes:

Shows where sections A1 and A2 are from, on map.



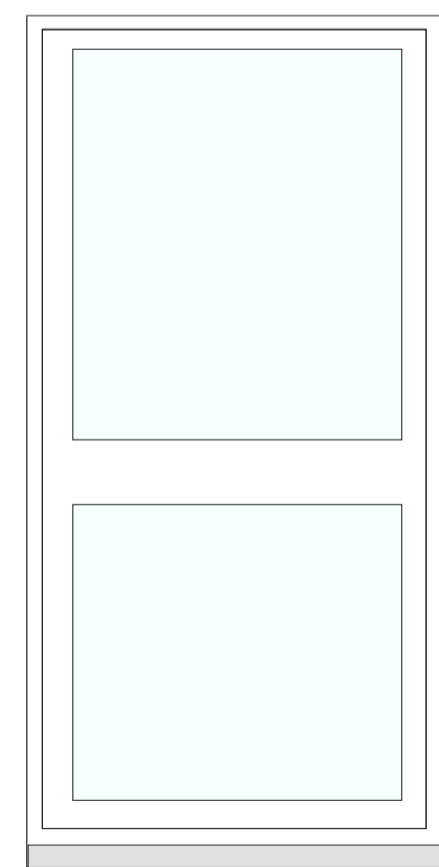
Full height windows
typical dimensions
2200 high
800 wide

Top hung opening window
Restricted opening
Emergency exit catch
Double glazed



Exterior doors
typical dimensions
2250 high
1150 wide

Fire proof, see Building Regulations
Double glazed



Doors and windows

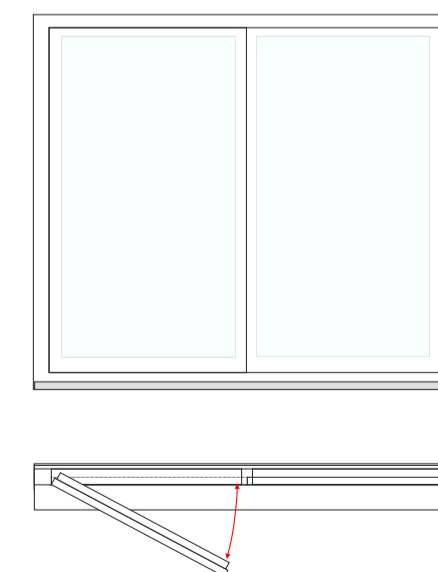
These drawings show the basic design for the joinery.

It is proposed that all windows, doors and roof lights are made from wood, from a renewable resource. It is proposed that the joinery is finished in a light, natural colour eg white.



Small window
typical dimensions
1000 high
1100 wide

Fire proof, see Building Regulations
Restricted opening
Emergency exit catch
Double glazed



NORWICH BACKPACKERS
191 king Street,
Norwich.

Illustration scale 1:50 and 1:20.

Supplementary drawings No1 .Drawings: Millgate Design
September 2010.

01603 279979
Copyright T.Cringle

Notes:
All written dimensions are in millimetres.
All measurements should be checked on site, prior to work being carried out.
Please use scale for illustration purpose only.
Colours are used to illustrate different materials, but NOT as the actual material colour.
For materials used and colours please see photos and specification notes.