

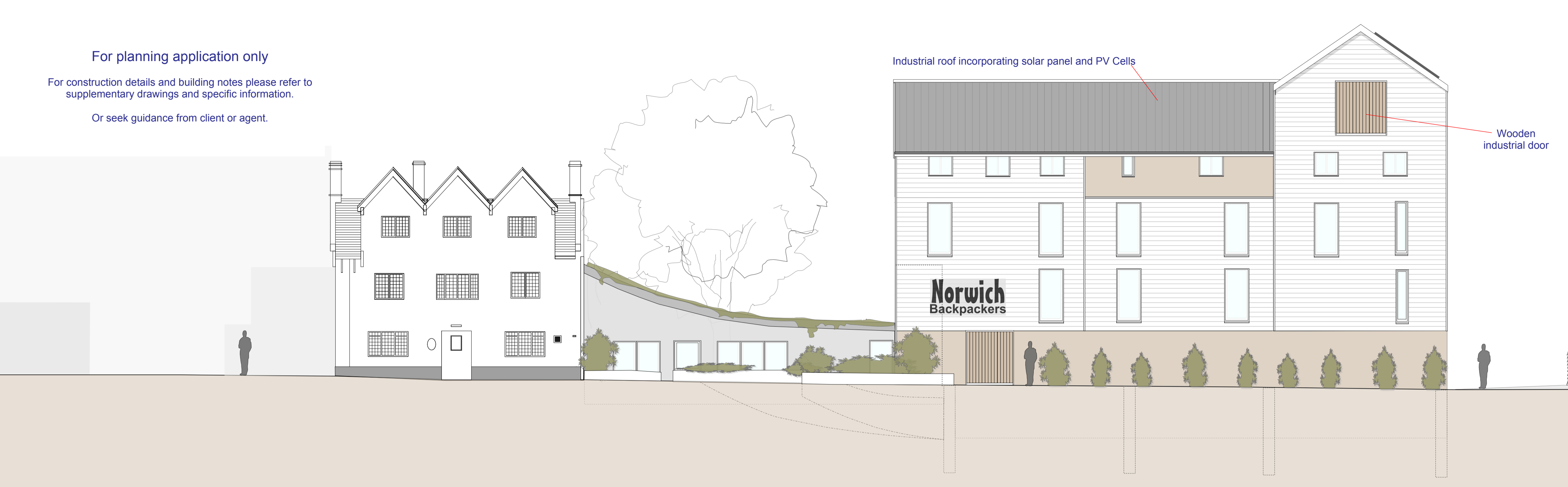
For planning application only

For construction details and building notes please refer to supplementary drawings and specific information.

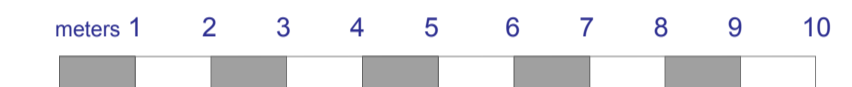
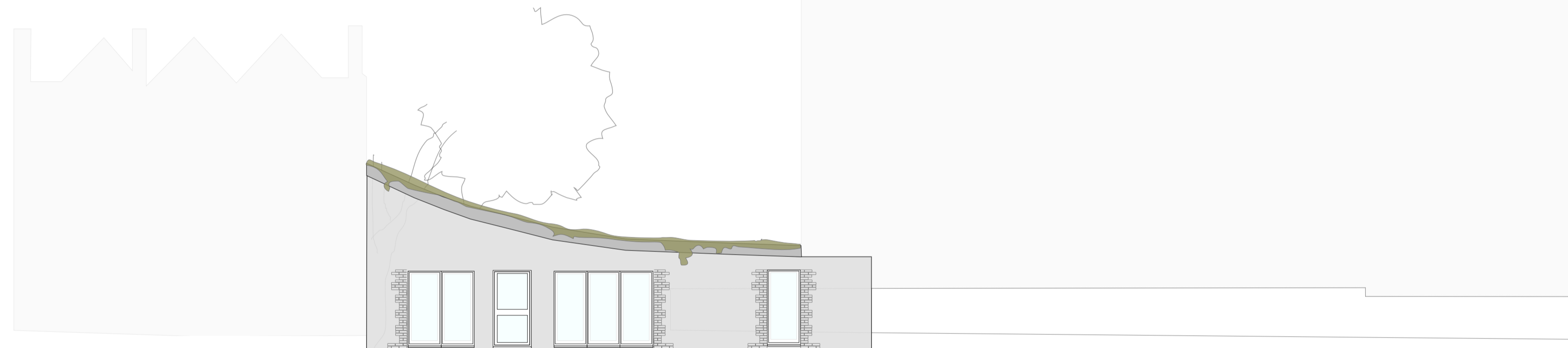
Or seek guidance from client or agent.

Industrial roof incorporating solar panel and PV Cells

Wooden industrial door



Norwich Backpackers from the WEST SIDE, from point C (KING STREET)



The RECEPTION BUILDING, front from KING STREET. Recycled flint, chalk and brick construction, oval walls, green Roof.

Solar panel and PV Cells

Industrial roof

Timber fascia

Norwich Backpackers

Lime render

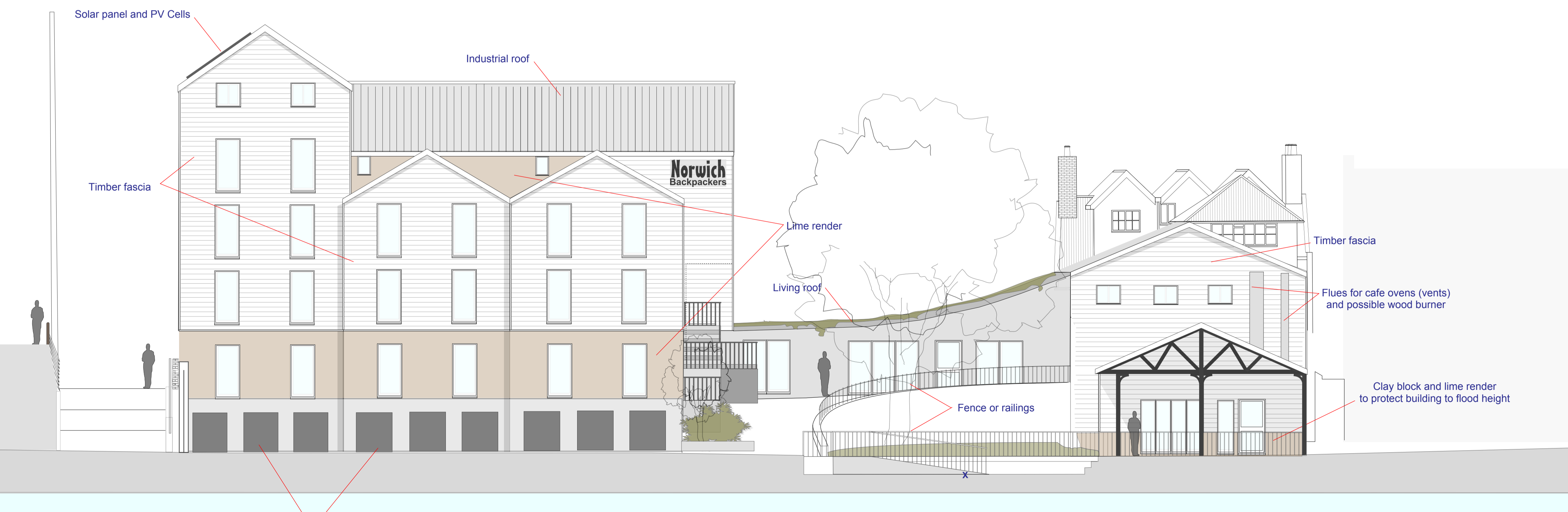
Living roof

Timber fascia

Flues for cafe ovens (vents) and possible wood burner

Clay block and lime render to protect building to flood height

Fence or railings

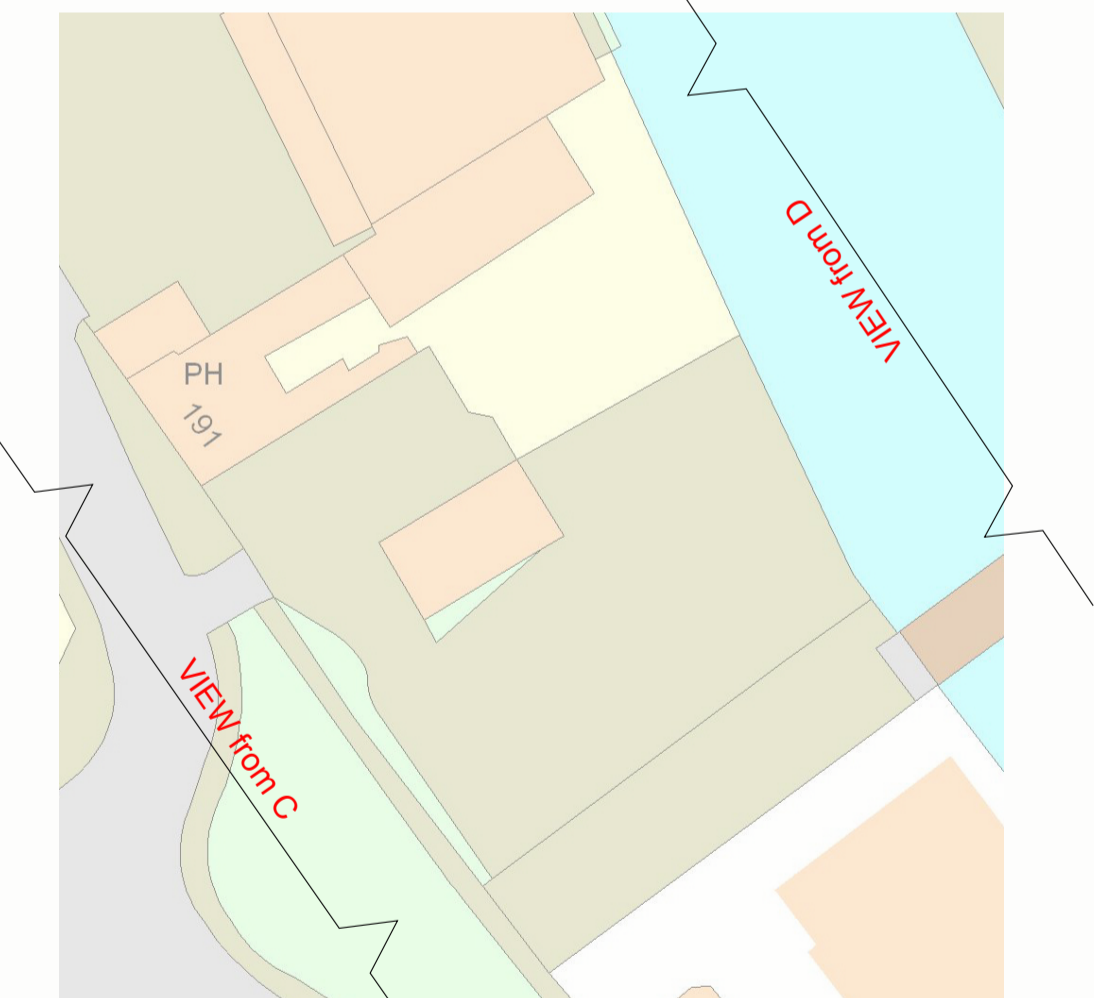


Canoe storage, open, to allow any potential flood water to flow out of ground floor (car park)

Norwich Backpackers from the EAST SIDE, from point D (RIVER)

Construction notes:

Shows where sections C and D are from, on map.



NORWICH BACKPACKERS
191 King Street,
Norwich.

Master plan. Illustration scale 1:100.
REVISED
South and North (side) Elevations **PROPOSED**
Drawings: Millgate Design
September 2010.

01603 279979
Copyright T. Cringle

All written dimensions are in millimetres. All measurements should be checked on site, prior to work being carried out. Please use scale for illustration purpose only. Colours are used to illustrate different materials, but NOT as the actual material colour. For materials used and colours please see photos and specification notes.