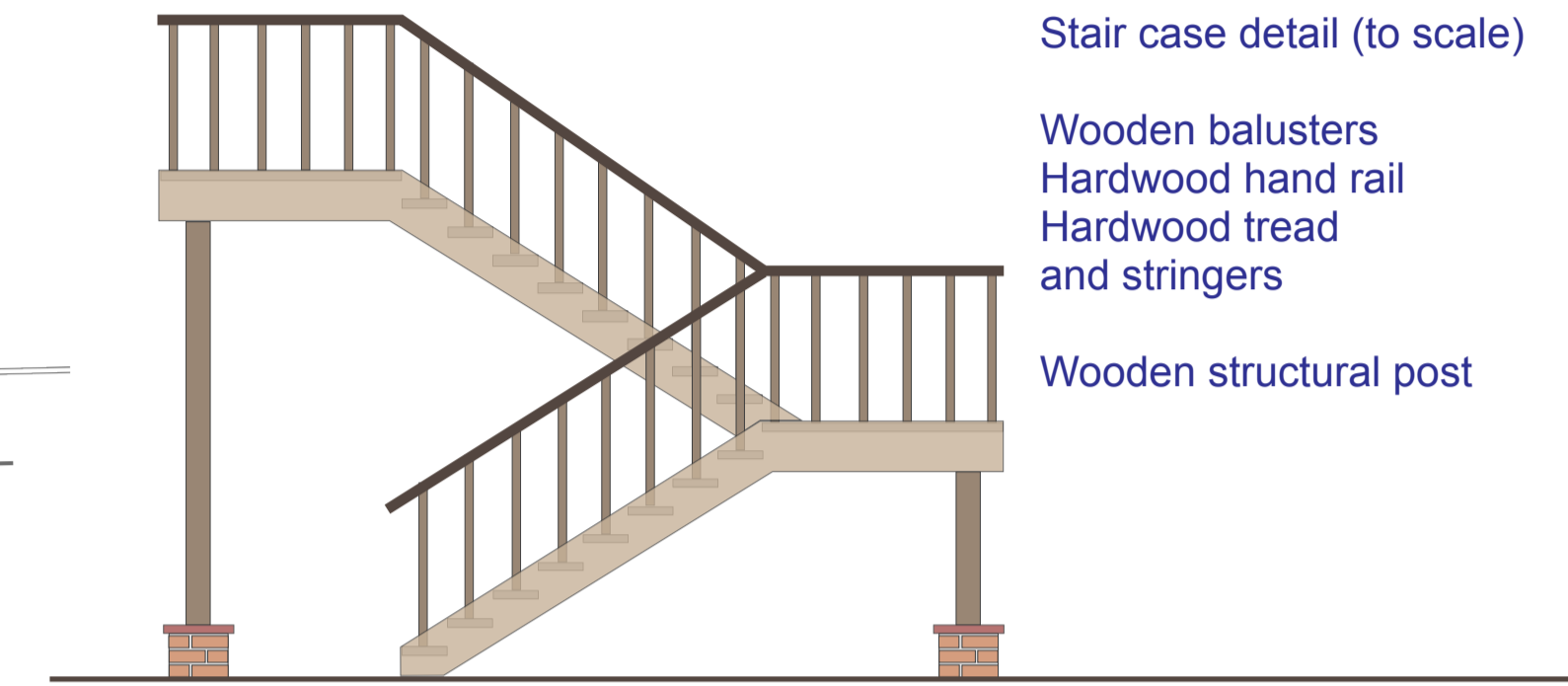


For planning application only

For construction details and building notes please refer to supplementary drawings and specific information.

Or seek guidance from client or agent.

Industrial roof incorporating solar panel and PV Cells

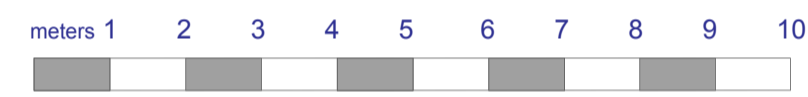


Stair case detail (to scale)

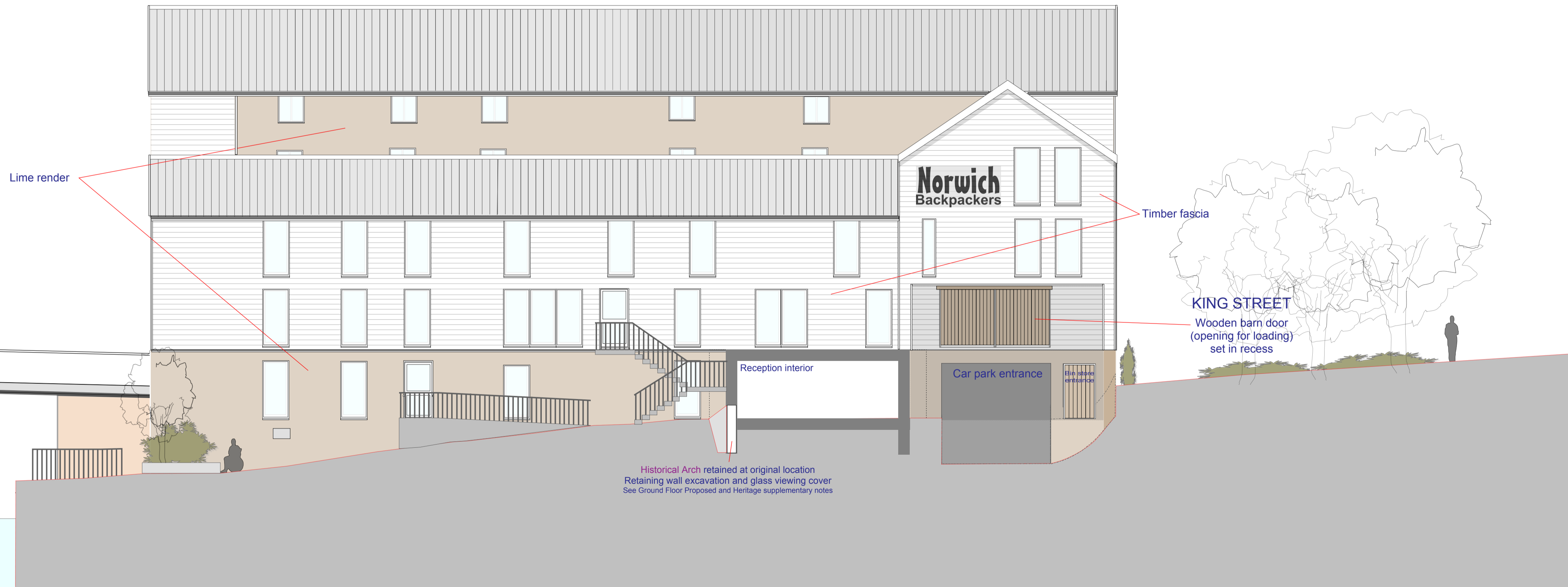
Wooden balusters  
Hardwood hand rail  
Hardwood tread  
and stringers

Wooden structural post

Norwich Backpackers ELEVATION from E, *proposed*



Industrial roof



Lime render

Norwich Backpackers

Timber fascia

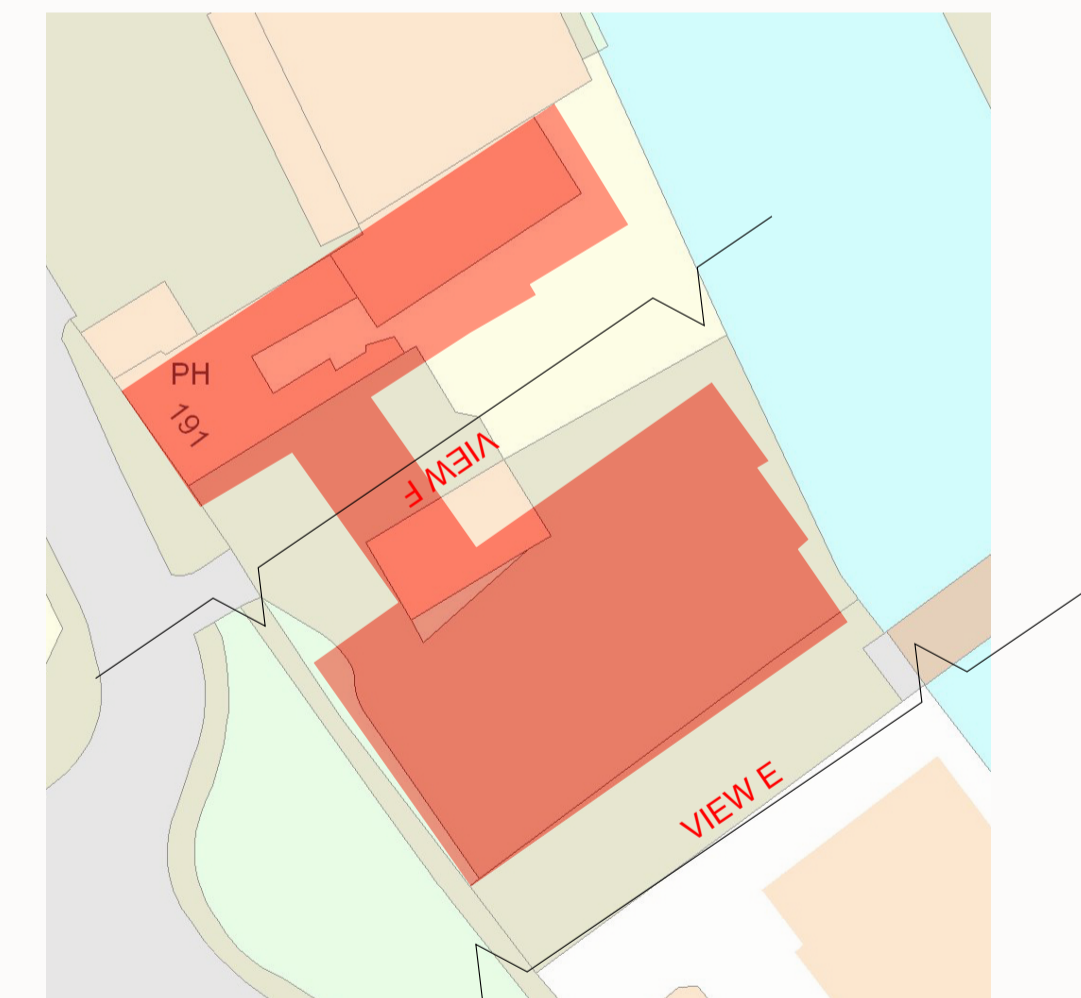
KING STREET  
Wooden barn door  
(opening for loading)  
set in recess

Historical Arch retained at original location  
Retaining wall excavation and glass viewing cover  
See Ground Floor Proposed and Heritage supplementary notes

Norwich Backpackers from F, *proposed*

Construction notes:

Shows where sections A and B are from, on map.



NORWICH BACKPACKERS  
191 king Street,  
Norwich.

Master plan. Illustration scale 1:100.

REVISED

Side ELEVATIONS of PROPOSED Drawings: Millgate Design  
September 2010.

01603 279979  
Copyright T. Cringle

All written dimensions are in millimetres.  
All measurements should be checked on site, prior to work being carried out.  
Please use scale for illustration purpose only.  
Colours are used to illustrate different materials, but NOT as the actual material colour.  
For materials used and colours please see photos and specification notes.